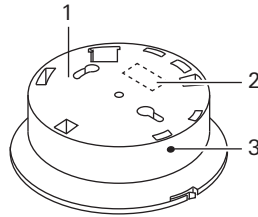




230 V base for smoke alarm device Dual 2331 02

GIRA

282331002/B 42/15



- 1 230 V base
- 2 Cable inlet (pre-perforated)
- 3 LED display (green): 230 V mains voltage

Mounting the base



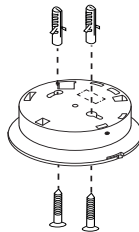
Danger

Touching live parts can result in serious material damage or injuries, e.g. due to fire or an electric shock.

Isolate before working on the device and cover up live parts in the vicinity.

In case of non-observance, there is a risk of personal liability for material damage and injury!

1. Switch the mains voltage off.
2. Cut out the pre-perforated slots for cable inlet using a suitable tool (e.g. knife).
3. Mount the base.



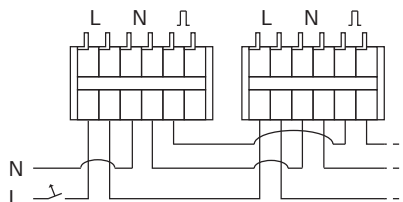
4. Connect the 230 V power supply on the terminal block. Plan a conform circuit breaker (accord. to EN 60950-1:2014-08).
5. If desired, network more than one 230 V base (up to 40 bases).



Note

Networking may only be "in series", as signal transmission issues can result otherwise.

Other types of networking (e.g. star-shaped) are not permitted.



6. Switch on mains voltage.
7. Lock the smoke alarm device Dual Q onto the base.

Operating and alarm signals

Signalling with the 230 V base

Signal tone	Ring indicator	Meaning
-	-	Operating mode
Loud interval tone	Flashes rapidly	Local smoke alarm
loud pulsating signal tone	-	Local heat alarm
8 brief signal tones (60 s cycle)	-	Fault/soiling
2 brief signal tones (60 s cycle)	-	Weak battery*
1 s-long signal tone in 2 s cycle	Lights up continuously	Function test (alarm device has triggered alarm)
1 s-long signal tone in 2 s cycle	Flashes rapidly	Function test (alarm device has not triggered alarm)
-	-	Muting
Brief signal tone in 1-s cycle	-	EMC fault
Brief signal tone in 250-ms cycle	-	Identification of alarm device

* Re-change the alarm device within 30 days.



Ring indicator

Please note the different signalling of the ring indicator for "Fault" and "Weak battery" when using the 230 V base and powered by batteries only.

Signalling for wired or radio networking

Signalling when a smoke alarm device is triggered is as described above. The networked smoke alarm devices signal as follows:

Signal tone	Ring indicator	Meaning
Loud interval tone	-	Smoke or heat alarm message
1 s-long signal tone in 2 s cycle	-	Function test (remote starting)
2 brief signal tones (60 s cycle)	-	Weak battery*



Smoke alarm device Dual Q

Please see the installation and operating instructions of the smoke alarm device Dual Q for all the functions of the smoke alarm device Dual Q (e. g. switching off smoke detection, function test, etc.).

Technical data

Rated voltage: 230 V AC, 50/60 Hz
Display element: Green LED: 230 V
Ambient
temperature: -5 °C to +50 °C
Protection class: IP 42 with mounted
smoke alarm device
Weight: Approx. 95 g
Housing (dia. x H): 120 x 37 mm



Mains voltage failure

In case of mains voltage failure, the battery integrated in the smoke alarm device automatically supplies the power.

Warranty

The warranty is provided in accordance with statutory requirements via the specialist trade.

Please submit or send faulty devices postage paid together with an error description to your responsible salesperson (specialist trade/installation company/specialist electrical trade).

They will forward the devices to the Gira Service Center.

Gira

Gira
Giersiepen GmbH & Co KG
Electrical installation systems
P.O. Box 1220
42461 Radevormwald
Phone +49 (0) 2195 602 - 0
Fax +49 (0) 2195 602 - 191

info@gira.de
www.gira.de