

Important information on the Gira SmartTerminal Update 2.0

This SmartTerminal update remedies technical difficulties (bug fixing) and also provides your SmartTerminal with optimised functions.

The update was carefully checked by Gira. Technical problems cannot be fully excluded, however. For this reason, check the functionality of your SmartTerminal after the software update.

System requirements

You will require a conventional desktop or laptop computer with the Windows® 98, 2000 or XP operating system to download and copy the software update to the SmartTerminal. Either a network containing the SmartTerminal and this computer or a crossover cable is also required for transfer of the update to the SmartTerminal.

When installing the update, please comply with the operating instructions ("Commissioning and installation" chapter) available for download with the software from the Gira website.

Recommended maximum configuration

The old maximum configuration was retained with software update 2.0:

- A maximum of 32 time functions can be created (limited by program).
- A maximum of 32 scenes with up to 30 data points can be created (limited by program).
- A maximum of 32 event functions can be created (limited by program).
- A maximum of 10 rooms with up to 15 data points (recommended) can be created, with a total of up to 150 data points in the entire SmartTerminal project (recommended).
- A maximum of five E-mail accounts can be created (limited by program).

The creation of rooms and data points has not been limited by the program. It is also still possible to create more than 10 rooms and 150 data points in the SmartTerminal project. Note, however, that such a configuration may hinder the performance of your SmartTerminal. If the recommended values are exceeded in the SmartTerminal, this is displayed in red under **Einstellungen/Systemeinstellungen/Aktuelle Einstellungen**.

What does the software update change?

The SmartTerminal update deals with two major components, the firmware (V. 2.00-8) and the ETS plug-in.

Firmware:

The new firmware for the SmartTerminal is available in the download area of the Gira website. Once you have downloaded the file, the update can be transferred from the (commissioning) computer to the SmartTerminal via a direct connection or a network.

ETS plug-in:

The new ETS plug-in is also available in the download area of the Gira website. This is a database that must be imported into either the ETS 2 or the ETS 3. The database has the file extension vd2 for the ETS 2 and the extension vd3 for the ETS 3.

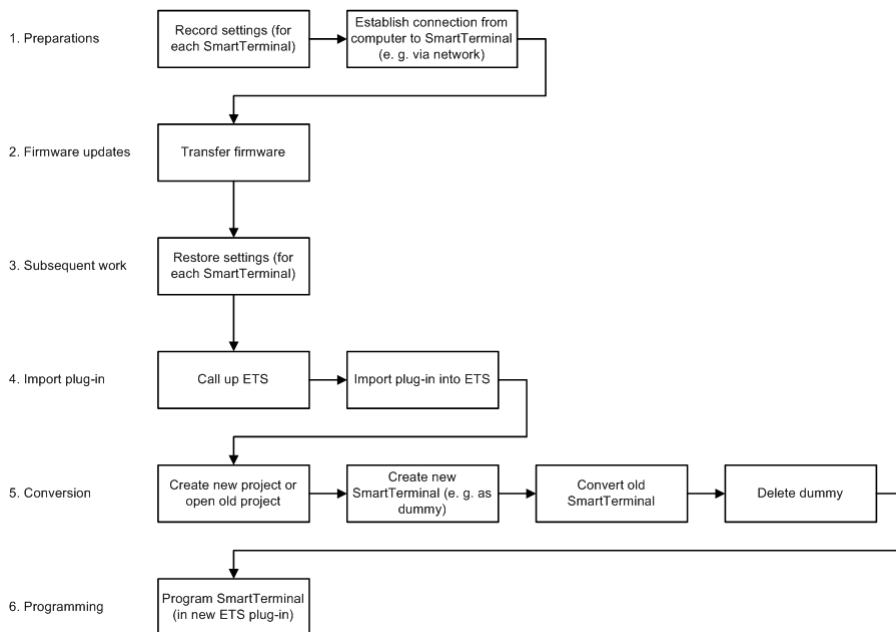
A new database entry is created when the database is imported into the ETS. This means that SmartTerminals in old projects that are edited with an "old" plug-in can either continue to be edited with the old plug-in or you can carry out a conversion that enables it to be edited with the new plug-in.



Note: It is imperative that the update be carried out.

We strongly advise equipping older SmartTerminals with the new firmware and carrying out conversion for the new ETS plug-in!

Overview of software update installation



What should I know before updating the firmware?

The following settings are changed by the update:

- The favourites keys must be reprogrammed.
- E-mail accounts must be set up again.
- The retrieval intervals for online services and E-mail must be set as required.
- The weather region must be reset.
- The physical address of the SmartTerminal is set to 15.15.255 and must be reprogrammed with the previous physical address.
- The proxy server address must be specified once again for network settings.
- Configured time-switch functions, scenes, events and the old colour scheme remain **unchanged**.

Please record the previous settings here so that you can restore them after the firmware update.

Weather region:

Favourites keys assignments:

Favourites key	Assignment
Key 2	
Key 3	
Key 4	

E-mail account settings:

Setting	Account 1	Account 2	Account 3	Account 4	Account 5
E-mail address:					
PIN					
Inbox					
Protocol					
Server					
Port					
Max. E-mail size					
Login					
Password					
Encryption					
Outbox					
SMTP server					
Port					
Login					
Password					

Retrieval interval for E-mail:

Retrieval interval for online services:

Proxy server address:

What should I know when updating the firmware?

1. Transfer the new firmware as described in the operating instructions (see "Commissioning and installation" chapter).
2. Set up all E-mail accounts in the SmartTerminal once again (refer to your notes).
3. Check all settings of the SmartTerminal and set the online intervals, EIB present? etc. as needed (refer to your notes).



Important: Not backward-compatible!

Firmware with an older version number (e.g. V. 1.11) may not be transferred to SmartTerminals equipped with firmware V. 2.0. Such a transfer would damage the SmartTerminal.

How can the old colour scheme of the user interface be replaced by the new scheme (blue background, white text) after the firmware update?

1. First save the old scheme (**Einstellungen/Benutzereinstellungen/Farben/Farben sichern**). You can save the old scheme under **Scheme 1, 2** or **3**.
2. Confirm your input with **OK**.
3. Select the **Standard** button in the **Colours** mask.
4. Confirm with **OK**.
5. Exit the **Colours** window with **Back**.
6. The saved colour scheme can be restored at a later point in time via **Recall Colours/Scheme x** in the **Colours** mask (x: scheme number to which the old scheme is to be allocated).



Note: Optimisation of the display via the contrast setting.

To optimise the brilliance of the new colour scheme in the display, adjust the contrast of the SmartTerminal. The contrast is adjusted by turning the operating button while pressing and holding the second favourites key.

How are older SmartTerminals in existing ETS projects converted so that they may be edited with the new ETS plug-in?

In case you allowed for SmartTerminals in a project and programmed them with an older plug-in (e.g. for firmware version 1.11), you can update your programming with the latest software. First transfer the firmware to the devices. Then convert SmartTerminals, which have already been programmed, so that subsequent editing of the configuration in the ETS with the new plug-in is possible.



Note: Only use a new plug-in in conjunction with new firmware.

Programming SmartTerminals in the ETS with the new plug-in is only possible if the device also uses the new firmware.

Note that SmartTerminal projects that have already been converted can no longer be edited with the old plug-in. For this reason, back up your ETS database before importing the new plug-in. This allows you to restore your ETS back-up in case of emergency.



Note: Update firmware first.

First update the firmware of your SmartTerminal before transferring the data from your ETS project to the SmartTerminal after conversion.

To convert older SmartTerminals in existing ETS2 or ETS3 projects for editing with the new plug-in, proceed as follows:

1. Import the database with the extension vd2 (for ETS 2) or vd3 (for ETS 3) into your ETS. Comply with the information in the operator's manual of your ETS.
2. Open your existing project.
3. Create a new SmartTerminal (as a dummy).
4. Start the Configuration Assistant for the newly created SmartTerminal (e.g. via **Parameter bearbeiten**).
5. In the ETS 2: The **Konvertierung** window opens. All SmartTerminals that can be converted are displayed here.
6. In the ETS 2: Click **Alle auswählen**. Conversion now takes place automatically. Once the process is complete, a messages appears. Acknowledge this with **OK**.
7. In the ETS 3: A message appears notifying you that the project contains SmartTerminals with an earlier version number. If you are viewing the list of SmartTerminals and would only like to convert individual devices, click **Fortfahren**.
8. In the ETS 3: Click **Ältere Gerät(e) konvertieren** to convert all SmartTerminals. Conversion now takes place automatically. Once the process is complete, a messages appears. Acknowledge this with **OK**.
9. Delete the newly created SmartTerminal if you only created it as a dummy for conversion and no longer require the device in the project.

All SmartTerminals in your project are now converted and can be edited with the new plug-in. If you only selected individual SmartTerminals for conversion, please note that all unconverted devices in the project are still edited with the old plug-in.

An overview of all new and optimised functions.

Many of the new functions added by the update are not visible to users, as they run in the background. They help make the SmartTerminal more secure, stable and reliable, however.

The following functions are new or have been optimised:

- **Design:** A new standard design is available for the graphical interface. It is also possible to create and save three of your own designs (colour schemes).
- **E-mail client:** The E-mail client of the SmartTerminal supports the protocols POP 3, POP 3 over SSL, IMAP, IMAP over SSL, SMTP, ASMTTP and SMTP and ASMTTP over TLS. This allows E-mail accounts with leading Internet service providers to be accessed.
- **E-mail client:** The data volume of E-mails can be limited so that E-mails larger than a certain size are not downloaded from the E-mail server. E-mails loaded from the server are always displayed without attachments.
- **E-mail client:** The subject, sender and date information are now displayed on two lines in the inbox folder. In addition, E-mails can also be deleted directly from the inbox folder in the SmartTerminal. It should be noted here that the E-mails on the E-mail server of your service provider are also deleted upon the next synchronisation of the E-mail server and the SmartTerminal.
- **Online services:** Online services are called up selectively. This means that the SmartTerminal always downloads only the latest information from the Internet at the set interval. This reduces the data volume considerably and increases retrieval speed.
- **Group addresses:** display and handling of two- and three-digit group addresses.
- **Data points:** The editing of data points in the SmartTerminal has been limited. This prevents changes being made via the SmartTerminal that would then have an effect on the EIB project. For more detailed information, refer to the operating instructions of your SmartTerminal ("Configuration and basic settings" chapter).
- **Daylight saving time:** Automatic daylight saving time switching has been integrated.
- **Timemaster function (on the EIB screen):** The date and time can be sent to the EIB using the assigned group addresses.
- **Direct toggling:** The **toggle** option has been integrated on the **room allocation** tab (ETS plug-in). This allows switching operations to be performed by simply pressing the operating button. Only visible if the data point type is a 1-bit switching object.
- **Entry of 8-bit objects:** 8-bit objects can be entered quickly and directly via the operating button at the SmartTerminal (e.g. IP address, dimming values etc.).

- **Blind function:** Depending on the respective group address type, the **room allocation** and **shutter allocation** tabs are displayed in the configuration window of the ETS. This means that UP/DOWN/STOP operations can be implemented as with the SmartSensor. The **shutter allocation** tab is only visible if the selected group address is a shutter object (short time or long time).
- **Scene/event function:** fully reworked. Scenes can be assigned to individual favourites keys and then initiated by simply pressing a key.
- **Administrator function:** reworked, including protected data points. The PIN for administrators can be changed.
- **Standby:** Initial operation of the SmartTerminal in Standby "wakes up" the device. The desired function is not triggered until the second operation.
- **Confirmation prompt:** The **security request** option has been integrated on the **room allocation** tab. If this function is activated, a confirmation prompt appears in the SmartTerminal if building functions are to be changed via the SmartTerminal. Only visible if the data point type is a 1-bit switching object.